

# MONTHLY MEMBERSHIP PROGRESS REPORT

District 4 L2

Results as of: 4/30/2026

GMT:

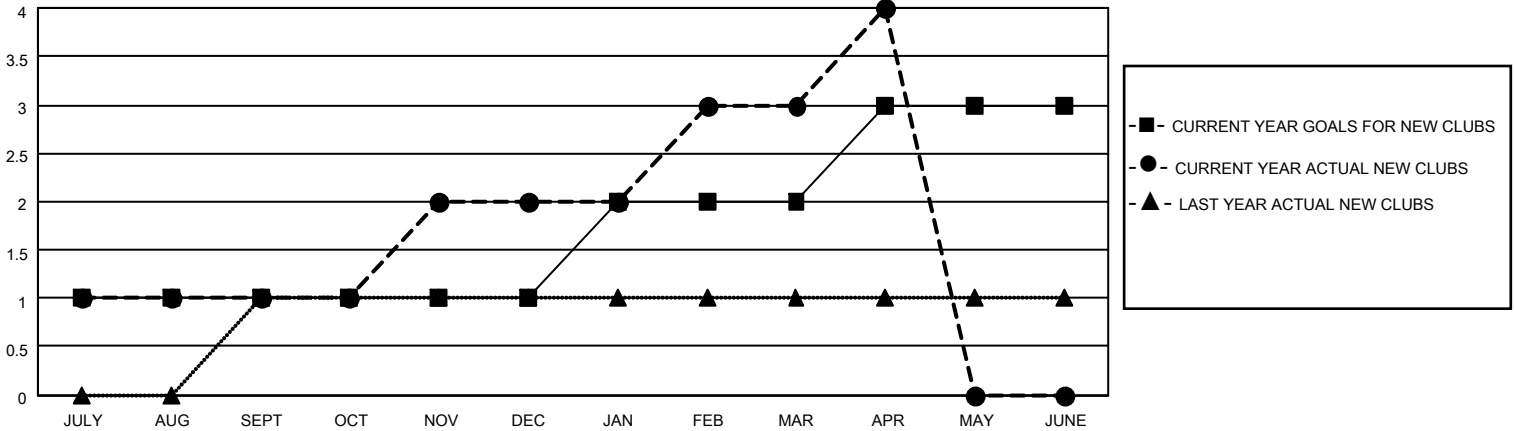
LOCATION CALIFORNIA

GMT CA

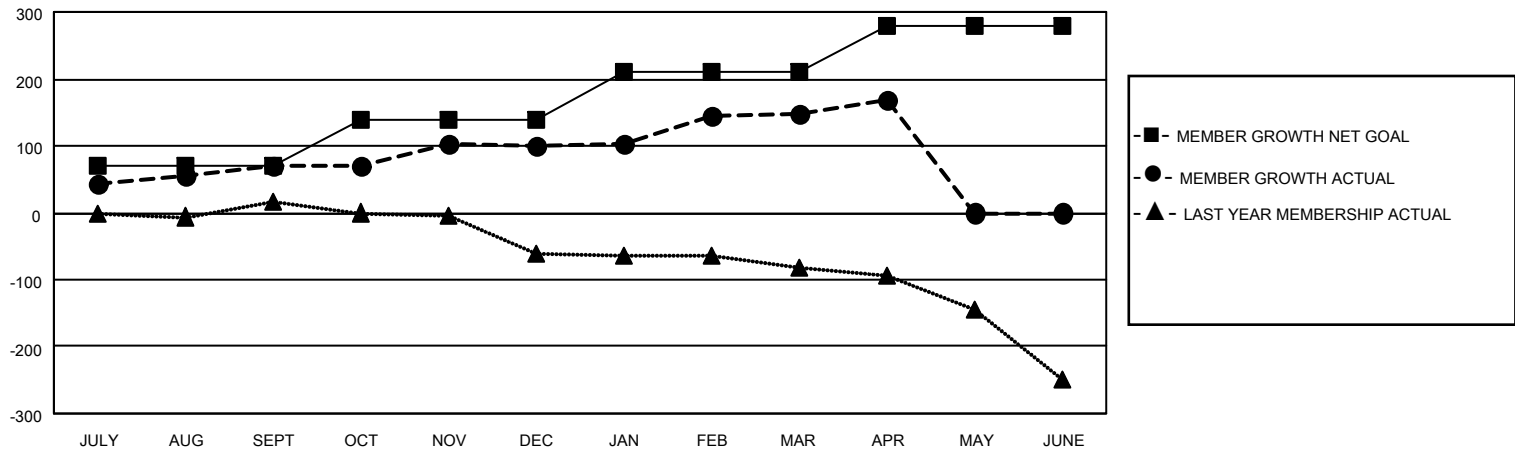
Clubs			
RESULTS FOR 2025-2026			
QUARTER	NEW CLUB GOAL	NEW CLUBS	DROPPED CLUBS
JULY/AUG/SEPT	1	1	0
OCT/NOV/DEC	0	1	1
JAN/FEB/MAR	1	1	1
APR/MAY/JUNE	1	1	0

Members			
RESULTS FOR 2025-2026			
QUARTER	MEMBER GROWTH NET GOAL	MEMBER GROWTH ACTUAL	DROPPED MEMBERS ACTUAL (including transfers)
JULY/AUG/SEPT	70	154	65
OCT/NOV/DEC	70	90	48
JAN/FEB/MAR	70	126	65
APR/MAY/JUNE	70	27	5

GOALS AND ACTUAL NEW CLUBS CUMULATIVE



GOALS AND ACTUAL MEMBERS CUMULATIVE



DROPPED CLUBS: 2	33 CLUBS OF 64 ADDED 1 OR MORE NEW MEMBERS	<b>GENDER DISTRIBUTION</b> MALE 810 (50.50%) FEMALE 792 (49.38%)
<b>DROPPED MEMBERS</b> DECEASED 12 CLUB CANCELLED 30 OTHER 141 TOTAL 183	<a href="#">CLICK HERE FOR CUMULATIVE MEMBERSHIP DATA</a>	TOTAL FAMILY UNIT MEMBERS 168 FAMILY MEMBERS PAYING HALF DUES 88